



## **SYLVESTER**

### **Damen Multicat 1406 - 14m x 6m**

A robust and extremely capable coastal workboat with undisputed pedigree. Ideal for dive support and many other tasks, with a proven track record of passage making and onsite flexibility.

#### **Specifications:**

Length	14.0m	Beam	6.0m
Draft Fwd	0.9m	Draft aft	1.25m
Clear deck area	10m x 5.8m	Moulded	2.0m
Displacement	40t	Gross tonnage	22.36t
Net tonnage	16.5t	Deck load	25t
Fuel cap	2 x1500lts	Transferable fuel	3000l
Deck Crane	17.5t/m		
Deck winch	2t		

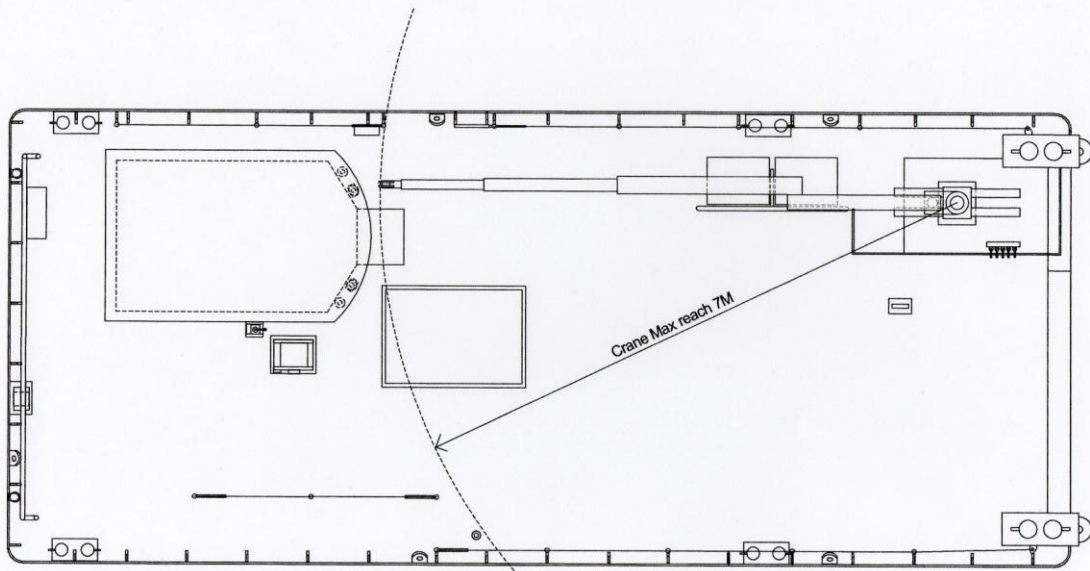
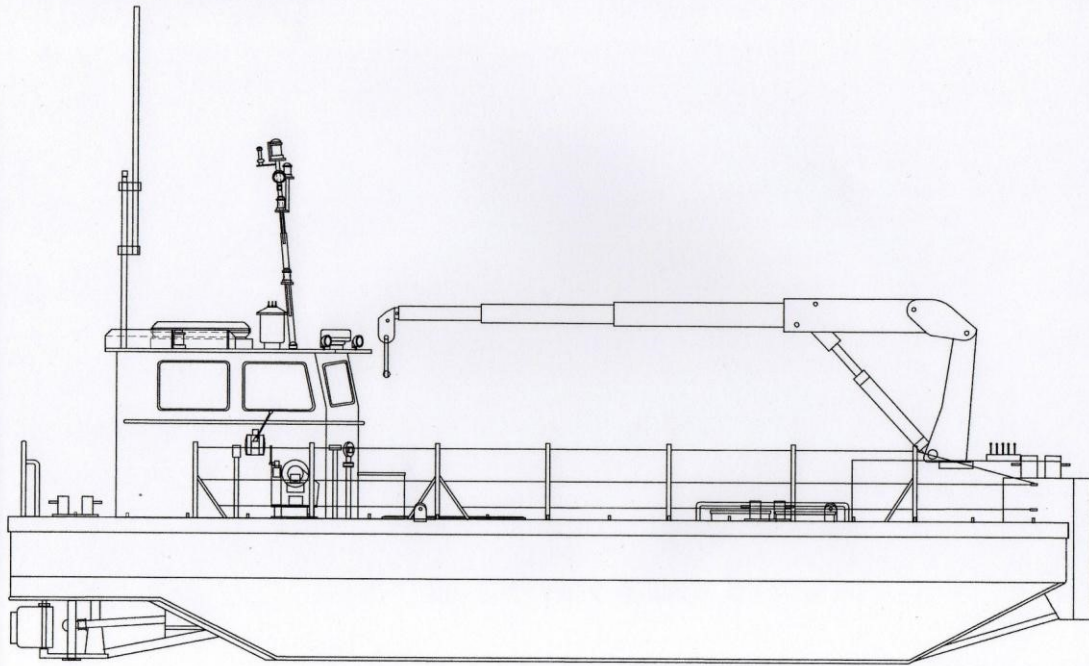
Propulsion	Twin screw - 2 x Daewoo 160hp @ 1800rpm
Speed	Approx 7-8kts

MCA Workboat Code of Practice – Cat 3 - 20nm from safe haven

- Full electronics package
- Comfortable day accommodation for 2 crew

Vessel available throughout UK and Ireland coastal waters.

SYLVESTER ELEVATION



SYLVESTER PLAN

